

Partnerships & Mission

Annual Report 2020

www.southwell.anglican.org

Adapting to a changing world

Over the past year the partnerships and mission work in the diocese has tried to adapt to the changed world, respond swiftly to the needs of vulnerable people and communities, and proclaim afresh the gospel, by word and deed, in this current generation.

We have discovered new ways of worshipping and growing in our discipleship (kerygma focus), of serving the needs of our local communities (kingdom focus) and have perhaps started to reassess what being the Body of Christ means (koinonia focus). Kerygma, kingdom and koinonia are as essential as ever for us to be a healthy church, but how we understand, express and incarnate this may never be the same again.

A paradigm shift is a time when the usual and accepted way of doing or thinking about something changes completely. I wonder if the impact of the Covid 19 pandemic in 2020/21 will be seen as forcing a paradigm shift on almost every aspect of life, including the mission and ministry of the church.

There have been losses – winter shelters shut, food banks closed, lack of social contact, but there have also been imaginative and significant responses. Hotels sheltering rough sleepers and asylum seekers with churches providing food and clothing; food parcels and hot meals delivered to local homes; coffee mornings, support groups, Bible studies using zoom/teams or phone-based services.

On the one hand there has been the loss of opportunities to worship together in our churches, on the other, thousands of people who are housebound or not even on the fringes of church life have been able to access live and recorded worship.



During 2020 two important pieces of research highlight the significance of the church's holistic engagement with the needs of so many people. The GRA:CE project helpfully indicates that church growth, social action and discipleship do belong together, not apart.

<https://cuf.org.uk/what-we-do/the-grace-project>.

And national Church of England statistics indicate the huge impact the local church has in its wider community. (Our diocesan information by deanery can be found

<https://southwell.anglican.org/mission-ministry/seeking-justice/>

We may be living in a season of unprecedented change, we may be seeing a paradigm shift that is hugely demanding, but we as the Body of Christ continue to be called to be faithful, hopeful, joyful agents of the transformative, creative and healing purposes of God, the Holy Trinity, Father, Son and Holy Spirit.

David McCoulough
Director of Partnerships
& Mission





Offering a lifeline...

When walking through town and city centres across the diocese you cannot help but notice an increasing number of people experiencing homelessness.

The flow of rough sleepers into Nottingham city, for example, continues to be high at around 150 people per month and on any typical night The Street outreach Team can find between 20 and 30 people rough sleeping*.

Over the past year - 490 households (50% families with children) were approved to go into Nottingham City temporary accommodation after being made homeless, with Christian-based projects and churches helping to furnish their accommodation and offer support and friendship.

Homeless Charities, Churches and Christian-run projects across the city and county play a key role literally offering a lifeline to increasing numbers of vulnerable people in the provision of projects like night shelters and drop-in centres where hundreds of amazing volunteers love and serve, growing in their following of Jesus Christ by being alongside some of the most marginalized people in society.



Nationally, during lock down 15,000 people were accommodated in self-contained emergency accommodation, typically hotels, B&Bs or hostels.



Many of these projects have developed expertise - Nottingham Winter Shelter, for example, was extended to become Nottingham Night Shelter to cover the remaining 32 weeks of the year with funding from Nottingham City Council under the Government's Rough Sleeping Initiative.

Night shelter provision throughout the UK was completely transformed by the arrival of the Covid-19 pandemic at the end of March 2020.

All communal shelters (many in church halls) were deemed a public health risk and instructed to close by the Ministry of Housing, Communities and Local Government (MHCLG) with immediate effect, with guests in Nottingham transferred to one of two hotels as part of the government's "Everyone In' Initiative in order to comply with the lockdown rules and to be safe during the pandemic.

Nationally, this resulted in 15,000 people being accommodated in self-contained emergency accommodation, typically hotels, B&Bs or hostels.

In Nottingham city from the end of March until the end of June 2020 - 168 people were accommodated and had access to health and other services, with food provided by voluntary and faith groups.

Key benefits of the use of hotels were:

- Guests were easier to reach and support**
- Guests were more open to collaboration**
- Health of guests was enhanced due to sustained good nutrition**
- Better environment for healing of physical wounds**
- Number of Covid infections has been low**
- 96 positive move on, 36 of which are now in long term accommodation**
- Of 37 with No Recourse to Public Funds, 30 now have settled status**

Given the successful outcomes achieved through the 'Everyone In' hotels - Nottingham Winter Shelter and Emmanuel House were asked to continue staffing one hotel which has now been extended until March 2021.





Partnerships in the Homelessness Sector/Preventative Work

Christian projects continue to work alongside voluntary sector homeless charities, meeting regularly at Nottingham Homelessness Voluntary Sector Forum.

One outcome of this is the launch of street.support.net/Nottingham/ which links people who are homeless in the city and county to find all the services they might need, from accommodation and hot meals through to mental health support and legal advice.

Whether provided by charities, churches or local councils, the services will appear on Street Support Nottingham. The website also provides links for members of the public to donate items such as clothes or food, time in volunteering opportunities or money to local homelessness charities

The Council sees the new Forum as an essential part of their strategy to tackle homelessness and rough sleeping (in delivering and prevention). The City convenes the Statutory Homelessness Strategy Implementation Group (SIG) - an essential inter-agency meeting involving a number of partners in the City.

The diocese is represented on the SIG and present issues/concerns/ways of working together on behalf of the strong faith network in the city which includes Nottingham's Faith Leaders Network and Faith Action Nottingham (FAN)

The FAN Housing Subgroup is looking at the whole issue of providing Christian housing to vulnerable people – aiming to be more intentional over the coming months – learning from each other and accessing other resources such as Archbishop Justin's Commission on Housing, Church and the Community.

*It should be noted though that the majority of homeless people are hidden from statistics and services as they may be staying with friends, sofa surfing, living in unsuitable housing such as squats or in 'beds in shed' situations. According to Government figures (February 2020) on a 'typical' night there are an estimated 4,266 people throughout the UK sleeping rough on the streets.



Welcoming asylum seekers and refugees

As a diocese we want our city and county to be a place where asylum seekers and refugees are welcomed, receive hospitality and compassionate treatment and the support to rebuild their lives.

The diocese works with charities supporting asylum seekers and refugees across the city and county and is a member of the Multi Agency Forum (MAF) which is a partnership between statutory agencies, Refugee and Charity sector and Housing Providers – all who work with asylum seekers and refugees to help them settle into the city and county and access the services they need.



Asylum Seeker

A person who has fled their country of origin and formally applied for asylum in another country but whose application has not yet been concluded.

Refugee

In the UK, a person is officially a refugee when they have their claim for asylum accepted by the government.

Key Charities: If you'd like to support and/or volunteer:

Refugee Roots

<https://www.refugeeroots.org.uk/>
Refugee Roots is a Christian charity that helps asylum seekers and refugees build relationships and navigate the complexities of building a new life in the UK. info@refugeeroots.org.uk
Tel 07462 092732 or 07307 857879

Notts Refugee Forum

<http://www.nottsrefugeeforum.org.uk/>
Offering advice, support (including specialised legal advice) and friendship, the Forum provides a wide range of support services for asylum seekers and refugees Tel 0115 9601230

Nottingham Arimathea Trust

<https://www.nottinghamarimathea.org.uk/>
Provides supported housing for Refugees and Destitute Asylum Seekers Tel: 0115 9249920



Host Nottingham

<http://www.hostnottingham.org.uk/>
Provides temporary emergency accommodation for destitute asylum seekers and newly recognized refugees from a week to three months. Also has a clothing bank and other services.
Phone: 07963740175 Email: hostnottingham@gmail.com

Welcome Box

<https://welcomeboxes.org>
Christian Charity that supports local churches deliver a box filled with small gifts and local information to asylum seekers and refugees who have recently arrived in their local area, making sure they feel welcome as they arrive.
info@welcomechurches.org info Tel 01332 498041

Churches Refugees Network - to find out more about how churches can support asylum seekers and refugees please contact
Email: Liam.O'Boyle@southwell.anglican.org
<https://transformingnottstogether.org.uk>



Equality & Diversity : a work in progress

This past year has highlighted the huge challenge we face to become a more diverse and inclusive society.

We face particular challenges and opportunities in the church. Changing our culture and facing up to institutional racism have to be priorities for the Church of England.

The publication of The Living in Love and Faith materials towards the end of 2020 provides us with resources to help us to listen and learn together about love, faith, sexuality and relationships. Diocesan staff are working to facilitate reflection and discussion at personal, parish and diocesan level during 2021.

BAME Advisory Group

The killing of George Floyd, and the protests by the Black Lives Matter movement have led to renewed conversations and debates around racial injustice – both individual and systemic/institutional – which has impacted the Church as well as many other institutions.

For the diocesan BAME Advisory Group this has brought more focus – both for group members and for diocesan senior staff who have ‘diversity’ as one of seven key strands.

“The BAME advisory group is absolutely essential in encouraging our diocese to take practical steps in increasing diversity in the life of the diocese”. (Rev Francis Wainaina, Chair BAME Advisory group)

Plans are on course for a Bishop’s Study Day on Racial Justice which will happen in March 2021 with guest speakers Ben Lindsay and Rev Sharon Prentice.

The recent Church of England’s Anti-Racism Consultation has focused us on the priority of driving forward actions and implementation – which will be shaped by the outcomes of the Archbishops’ Commission to address racism in the Spring 2021.

Hate Crime

The diocese is represented on the Safer Nottinghamshire Board’s Hate Crime Steering Group – made up of Statutory and Voluntary/3rd Sector Organizations – this co-ordinates partnership activity around hate crime in Nottinghamshire and looks at the challenges of hate crime and how we respond to it. The group also facilitates opportunities to bring diverse communities together and increase community cohesion.

Near Neighbours

A joint initiative between the Church of England and the Church Urban Fund which brings people together who are neighbours so that they can get to know each other better, build relationships of trust and join together in projects that improve the local community they live in.

<https://www.near-neighbours.org.uk/about>

There are small grants available administered through hubs – please contact:

Lindsay Cressey

lindsay@transformingnottstogether.org.uk

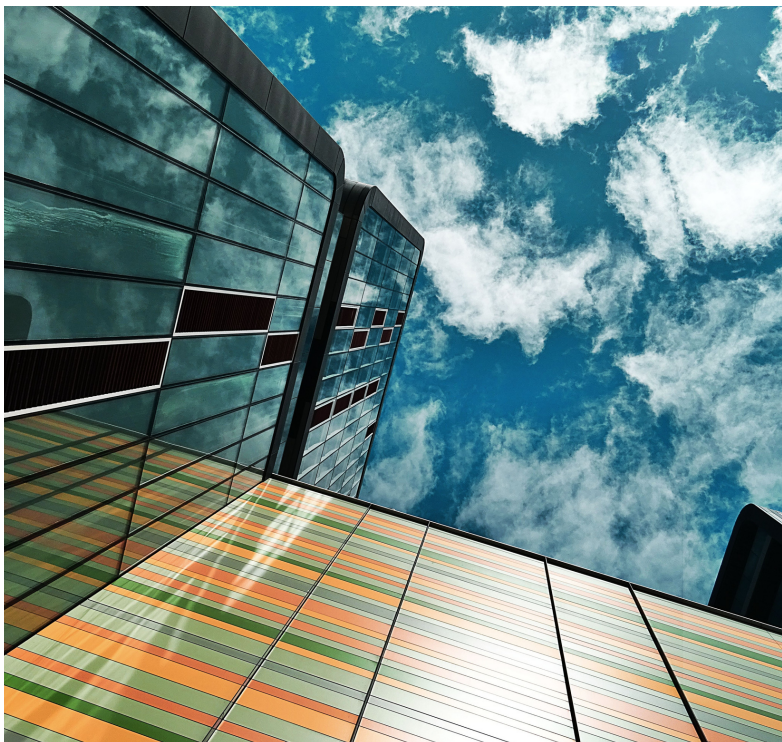
Enable Group

Disability Awareness. The Enable Group met three times during 2020, all by zoom.

Reaching the working world

Nottingham Workplace Chaplaincy Report 2020

Reaching the working world of Nottingham in new ways in a new environment with the unchanging message of the love of God in a broken world.



Wider

Whilst the pandemic has curtailed any new businesses coming into the Chaplaincy portfolio the opportunities to reach into each company with a broader reach by using the digital world. Meetings individuals and managers with their teams is easier when we only have to 'hop on Zoom' offering encouragement and support and prayer where appropriate.

The Chaplaincy continues to partner with Parish Churches as they engage and minister to the working world. In 2020 we saw the launch of Sherwood Chaplaincy from St Martins Church. The Chaplains saw relationships begin to build almost immediately and they in turn partnered with a local café to serve food to the hungry in the thick of 2020. When the café had to close the feeding continued and ministry called Nourish moved into St Martins church. New folk are finding their way to St Martins and experiencing the hospitality of Christ.

They are anxious to be out and about being Chaplains to the Community again – but the gift of Nourish is a work of God that they never anticipated.

The Chaplaincy has also broadened within the Nottingham Police Force, Chaplains are now assigned to over half the Police stations in the County and going through the process of Induction and Security clearance. This opportunity is unprecedented, and we pray that in the months ahead, this ministry will continue to develop and mature.

Younger

Some of those who have been hardest hit have been the younger generation. Although they have the advantage of being digital natives their social spaces have disappeared. The University of Law quickly went entirely online and support by Chaplaincy as with everyone else was offered 'virtually'.

Reaching out to those who are struggling the most continues to be challenging and exhausting as we seek to offer creative ways to engage and ensure no-one is lonely or lost.

Deeper

At the turn of the year the Chaplaincy worked with St Mary's in the Lace Market to deliver a Wellbeing Course.

Over breakfast and conversation we explored what wellbeing might look like in relation to faith – using the book *Sanctuary* as inspiration. We were able to conclude the course just before the pandemic broke, but we hope to continue to offer resources to the working community later in 2021.

It has been a privilege to work with companies as they care for their staff – particularly as they face working from home, some homeschooling, some isolated.

The YMCA is one among many who have recently appointed a Wellbeing Officer – it is good to be able offer support with them in these difficult times.

Net Zero Carbon Church

At the February 2020 meeting of the General Synod an amended motion in response to the global climate emergency was passed challenging the Church of England to work towards reaching net zero emissions by 2030.

Initial Diocesan Response

With the Covid-19 crisis hitting us in March, our priorities as a diocese have been in responding to the immediate need and challenges of the pandemic.

However, work has been going on at diocesan officer level which has involved engaging with national colleagues on how best to respond to this very challenging motion.

- 1) Designated Revd David McCoulough, Director of Partnerships and Mission as diocesan lead.
- 2) Established a Caring for Creation Steering Group, that will meet termly with a strategic focus. (Diocesan Bishop, Dean, CEO and diocesan lead.)
- 3) Established a Caring for Creation Working Group that will help shape our response and implementation of strategy.



Diocesan Action Plan

This is a work in progress.

At the heart of this is integrating our Caring for Creation work with the diocesan priorities of Growing Disciples Wider, Younger Deeper. The Steering Group has identified likely streams of work which include :

How do we agree and raise awareness of diocesan baseline carbon footprint ?

How to become an Eco- Church/ Eco-Diocese?

How to engage church schools?

How to engage children, young people and families in our churches?

To outline proposals for Clergy Housing/Jubilee House/other diocesan owned buildings



There are now 31 churches in the diocese registered with A Rocha's Eco Church initiative.

Eight churches, including the Cathedral have achieved bronze Eco church awards. Two of these, St Patrick's, Nuthall and Holy, Trinity Southwell have achieved a silver award. If we are to become an Eco diocese we need 10% churches to register and 5% to achieve at least a bronze award.

<https://ecochurch.arocha.org.uk/how-eco-church-works/>

Contacts

DIRECTOR OF PARTNERSHIPS & MISSION
David McCoulough
01636 817246
davidmcc@southwell.anglican.org

NOTTINGHAM WORKPLACE CHAPLAIN
The Revd Jo Tatum
07525 641320
jo.tatum@southwell.anglican.org

PARTNERSHIPS OFFICER
Liam O'Boyle
07860507318
liam.o'boyle@southwell.anglican.org

For more details about Enable, Nottinghamshire Rural Support or any other group please contact: Catriona Gundlach 01636 817232, catriona@southwell.anglican.org

Diocese of Southwell & Nottingham, Jubilee House, 8 Westgate, Southwell Nottinghamshire NG25 0JH. www.southwell.anglican.org

Refugee Roots



"I've seen some changes for the better resulting from ongoing contact... Every bit of support offered to refugees and asylum seekers can make a massive difference."

Maggie, Volunteer



Refugee Roots welcomes all, helping those in need find friendship and a place to call home; a Christian charity that helps asylum seekers and refugees build relationships and navigate the complexities of building a new life in the UK.

Refugee Roots welcomes everyone, valuing each person and their culture, embracing equality and diversity while empowering and supporting those that need it most. Between January and November 2020 more than 112 Volunteers supported more than 173 individual asylum seekers and refugees. A range of empowerment initiatives have included befriending, accompanying asylum seekers to appointments, information, advice and guidance, as well as supportive groups and activities, such as free English conversation classes.

[Refugeeroots.org.uk](https://www.refugeeroots.org.uk)

[@refugeerootsuk](https://www.facebook.com/refugeeroots) www.facebook.com/refugeeroots www.instagram.com/refugeeroots

Our work in light of the pandemic took on new forms though Telephone Befriending, Online English Classes, Art at Home Sessions and the Virtual Kitchen Sessions with Windmill Community Gardens.

The Sharing Table, an inspirational cookbook that shares food, hope and love is packed with delicious vegetarian recipes and carries stories from refugees and asylum seekers who are looking for a place to call home launched in December sold 200 copies in three weeks and we are looking forward to printing more in 2021.

<https://www.refugeeroots.org.uk/shop/thesharingtable>

"I was feeling quite isolated...the hardest thing was being on my own. Refugee Roots helped me practically, with my wellbeing and my confidence."

- Mohammad, Participant



Nottingham Citizens

'Building the power of communities to work together for justice and the common good'

Moving with the times

Online campaigning has allowed more people to participate in local campaigns.

We are finding creative ways to 'take action', using video testimonies in order to connect with decision-makers in the city.

Weekly national training: Since the first lock down, dozens of Nottingham leaders participated in 'Learning Thursdays', a new weekly training initiative run by Citizens UK organisers equipping people from across the UK with the tools to take action on issues emerging from the pandemic. You can benefit too: citizensuk.org/learning

National campaigns: Nottingham leaders joined in a new 'Living Wage for Carers' campaign. Ten thousand care workers have been uplifted to a living wage so far.

Tackling structural racism

Hundreds gathered across three online listening events in the summer in response to the murder of George Floyd. We launched three new anti-racism teams in August; Better Books, Better Learning and Better Policing.

Looking within: diocesan colleagues joined in our 'Are you ready to talk about race?' action in October, with organisations taking away plans to implement internal change.

Listening deeper

In November, 120 people, representing 38 organisations, committed to over 750 conversations between then and February 2021 to better understand the issues people are currently facing.

100's of Anglicans received community organising training

21 Anglican leaders on city-wide campaigns

32 diverse member organisations in Notts

Connect

linktr.ee/nottinghamcitizens

t: @NottinghamCitz

f: @NottinghamCitz

i: [nottinghamcitizens](https://www.nottinghamcitizens.org)



Year message to John Brewin, Chief Exec of Nottinghamshire... am Citizens have been working in partnership with Notts Healthcare a new, awareness level session to tackle stigma around mental health. [nottshealthcare.com](https://www.nottshealthcare.com)

Jan 7, 2021 · Twitter Web App

Above: Edith Iheama, St Ann with Emmanuel Church, asks the Chief Executive of Notts Healthcare to meet with our mental health team to build a mental health taskforce - he agreed!



Marsha Farmer, St Nics (bottom left), shares her story at our August action

TRANSFORMING NOTTS TOGETHER



Since the first lock down, Transforming Notts Together has continued to support and equip individuals and churches in various ways to care for their local communities.

Connect

Projects and churches serving or looking to serve their local community:

TNT coordinate a number of networks around Nottinghamshire to bring together church and project leaders, build relationships and promote joined up working.

They are: **Faith Action Nottingham** - 90 members representing 58 organisations, **Faith Action Mansfield** - 34 members representing 29 organisations, **Faith Action Newark & Sherwood** (started Oct 2020) - 14 members representing 13 organisations, **Ashfield Faith & Support Network** - 30 members representing 23 organisations (started June 2020) and Places of Welcome - 19 venues with more in the pipeline for 2021. We also support **Faith Action Retford**.

If you would like to connect with your local network, or partner with us to set one up in your area, please get in touch.

Covid Cash Recovery

Free workshop to individuals and projects to train members of local communities to signpost, and provide accurate information, to people in a flexible, non-advisory manner – allowing those trained to reach and help as many people as possible.

"Loved this course, a huge thank you to the TNT team. I run our local community food bank and found the COVID Cash Recovery really helpful to inform our practice and give us some useful signposting tools. It is so helpful to have this amazing free resource whilst navigating finance in these tricky COVID times, would highly recommend!"

- Abi Pitt, Sneinton Salvation Army.

'Grief & Loss'

Free workshop which over 100 church members have attended so far, to equip churches wanting to support those affected by bereavement and other loss during this difficult season. In addition, we have just launched a new three week course, supporting churches and Places of Welcome, to set up bereavement support groups to continue this vital ministry.

This workshop has been one of the greatest 'gifts' of this time of restrictions. "Excellent input and resources. Have already recommended session to a colleague."

"It was very sensitively run. The facilitators offered lots of support and encouragement, making it easy to participate; they modeled the active listening approach that they were training us in. Small group size also made sharing easier."

We have given away a number of grants locally through **Near Neighbours** to grassroots community groups aiming to bring together in some way people from different faiths or ethnic backgrounds. We offer leadership mentoring and training, funding and a host of other support in Nottingham city to those working hard in their local communities to build relationships and tackle local justice issues.

In 2021 we are delighted to be able to grow this work, focusing especially on getting funding and support to BAME communities who have been adversely effected by Covid.

Dementia friendly churches workshops: 1-1 support for church leaders and churches wanting to explore how they could serve their local areas and are now coordinating a number of action groups in the county exploring, for example, how churches could develop new housing options both supported accommodation and longer term. We are also bringing churches who support in local prisons together to explore longer term how we could build in better more holistic support across our churches for ex-offenders and how churches could be involved in debt prevention for the future.

94 projects supported; 86 churches supported; 45 workshop delivered; 29 network meetings facilitated.

A series of videos called 'TNT talks' from projects across the diocese on how people are working for their local communities during Covid- see

<https://transformingnottstogether.org.uk/whats-new/p2>

If you'd like to find out more :

<https://transformingnottstogether.org.uk>

or get in touch with Hannah Buck

Hannah.buck@transformingnottstogether.org.uk