

Parish Profile 2023

Priest in Charge

St Peter & St Paul's

West Hucknall



Content

- Welcome
- Diocese of Southwell & Nottingham
- Our Deanery
- Our Parish
- Next Priest in Charge
- Prayer & Worship
- Who We Are
- Young People
- Priorities of the Role
- Our Hope for the Future
- Meet Our Lay Ministers
- What do our Congregation have to Say?
- Vicarage
- Financial Statement



Welcome

Welcome to St Peter and St Paul's Parish profile. We hope you find the following pages helpful as you consider if God may be calling you to join us in ministry, within the growing community of West Hucknall.

St Peter & St Paul's was part of the Hucknall Team Ministry, the parish of Hucknall, until 2019. At that time the parish was split and we became a parish in our own right as the parish of West Hucknall. There has been significant housing development within this parish and there are lots of missional opportunities.

With our welcoming and supportive church family, a wonderful blend of traditions in our worship and prayer, our modern and versatile premises based in the middle of the community, and the new housing springing up all around, we are well-placed for a new chapter of growth and engagement here in this fast-changing parish, as we look to God to lead us.

As a church, we want to work towards meeting the needs of those around us and strive to make our community a better place for everyone, taking the Gospel and the love of God with us into the community.

Please continue to read about the exciting opportunities around our parish as you discern if God is calling you to minister with us in this place.

Our Diocese

The Diocese of Southwell and Nottingham incorporates the City of Nottingham, the whole County of Nottinghamshire and five parishes in South Yorkshire. The population is 1.15 million – 51% live in the greater Nottingham conurbation, 31% in ex-mining areas and 18% in rural. There are 305 churches (252 parishes), served by 142 stipendiary clergy and licensed lay workers.

In 2016 a refreshed diocesan vision was embraced across the diocese, recognising the imperative for 'Growing Disciples: wider, younger, deeper':

- **'Wider'** in that we will seek to grow disciples in every part of the diocese, with no retreat from any community: urban centre; outer estates; rural villages; or market towns.
- **'Younger'** in that we will seek fresh ways to harness the boldness and creativity of children, students and young people across the diocese, not least in Nottingham which is the 4th youngest city outside London.
- **'Deeper'** as we grow in knowing Christ, so that as his disciples we can be an increasing blessing to the people among whom we live and serve in the workplace, family and community.

We are in the process of refreshing our vision for the next season. For more information about our approach, please visit [our website](#).

Every parish is encouraged to create its own 'Growing Disciples Plan' so that it can play a significant part in the strategic commitment to 'Growing Disciples wider, younger and deeper.' This may include identifying the opportunities to reach new people within the parish through a new worshipping community. The diocese has a 'Growing Disciples Fund' so that each parish can apply for up to £2000 per year to support its Growing Disciples Plan.

As a diocese we are seeking to invest in the post at St. Peter and St Paul, Hucknall with the expectation that the following three objectives set around these core values will be met:

- **Grace** (local ministry team equipped and inspired, not dependent on stipendiary leadership)
- **Growth** (clear numerical growth)
- **Generosity** (financial sustainability, meeting full ministry costs)

A statement from the Bishop of Southwell & Nottingham, the Rt Revd Paul Williams and Archdeacon of Newark, the Venerable Tors Ramsey



Bishop Paul Williams

"It is my hope that each worshipping community will develop a compelling picture of its own future in God's purposes with an expectation of growing numerically and in the scope of its mission. It is my prayer that the new vicar of St Peter and St Paul's will have the creative leadership and imagination to develop discipleship, plan for growth and reach out to the unchurched of all ages in its locality."

Archdeacon Tors Ramsey

"We find ourselves at a crucial moment for the church in relation to a changing culture. The good news of Jesus Christ is as important and life-giving as it has ever been. There are many opportunities to serve the people of West Hucknall with the gospel of hope in the power of the Holy Spirit. I look forward to supporting the congregation of St Peter and St Paul's in their mission and welcoming a new priest in charge to lead and implement the vision for the parish."





Our Deanery

The Diocese of Southwell and Nottingham includes the city of Nottingham and many rural and former coalfield communities across the whole of Nottinghamshire and a few parishes in South Yorkshire.

The Deanery of Newstead comprises a mixture of towns and villages of varying sizes in a former coalfield area of the county with a population of around 140,000 and growing with new housing developments. There is a pride in its industrial heritage, which has left its imprint on these communities, who have a strong sense of family, cohesion and loyalty to the local community. There is still pain around the pit closures of late last century. Much use is made by our population of their local church, especially for the occasional offices, such that some of our best mission opportunities and strategies are still grounded in "Christendom" mode. That said, there are a good and growing number of pioneering projects and a focus on developing new worshipping communities.

We are greatly looking forward to welcoming the new Vicar of St. Peter and St. Paul's Hucknall, who will be joining us at an important time in the life of the Deanery. Newstead Deanery is a healthy and supportive group. We are committed to the "growing disciples wider, younger and deeper" lead from our Bishops and to maintaining a strong and vibrant local presence for mission and ministry in all the communities of our Deanery.

Colleagues meet regularly at Chapter for support, encouragement and prayer as well as to receive information. Chapter is well attended by all clergy, where there is lots of positive energy and a growing level of trust, as praying for each other is a core value of Chapter. We try to meet socially a couple of times a year and to include family members as appropriate. The Deanery works in four clusters, some of whom meet weekly for prayer. Others work together in different ways. A small number of very generous retired clergy are involved in many areas of ministry – not just service cover.

Ordained and lay members of Deanery Synod work collaboratively and are excited by what God is doing here. Synod meetings are focused on strategy and prayer.

Our Parish

The parish of West Hucknall is 7 miles north west of Nottingham and came into existence on the 1st May 2019 after the dissolution of the team ministry. Hucknall has a proud history of coal mining, textile manufacture and aero engineering.

The parish comprises the Beauvale, Ruffs and Westville housing estates. A new estate is under development on the Rolls Royce site, a former RAF base, and is estimated to create in excess of 900 new houses. The population from the available 2011 census data is 8,991, but the current figure will have risen significantly with the new developments.

There are a variety of local shops within Hucknall, including two supermarkets. Hucknall is a market town, and there is a small market still operating in the neighbouring parish of Hucknall. The surrounding areas offer several larger retail parks, home to shops such as Ikea, Decathlon, Next, Marks and Spencer etc. A multitude of garden centres also surround us.

A Place to Live — Hucknall has some longstanding pubs, some newer micro-pubs, various restaurants and an independent cinema. If you like walking, to the north of the parish are the Misk hills, where some long walks can lead through to the neighbouring parishes of Annesley, Newstead, Brinsley and Greasley. The Beauvale Priory tea rooms are within walking distance through the countryside; they were once home to Carthusian monks. Newstead Abbey, a former Augustinian priory, is a longer walk or a scenic bike ride away. There is a leisure centre with a full swimming pool in the centre of Hucknall. Additionally, the nearby Rolls Royce site has a gym available for classes or gym membership.

Ministry Opportunities — The Parish of West Hucknall has two primary schools, one comprehensive school, three nursing homes and a large new housing estate, with all of which we have existing links. We also have connections with the local Air Cadets. We are a rapidly growing area with significant planned development.





Our Priest in Charge

We would love to see these qualities in our new Priest-in-Charge:

Commitment to Prayer and Spiritual Growth

Someone who:

- possesses a deep personal devotion to the Lord demonstrated through a consistent practice of daily prayer and spiritual growth
- will engage with and strengthen the faith of our existing congregation with a commitment to, and expertise for, engaging biblical teaching and whole-life discipleship
- has experience in leading across different traditions (Charismatic/Catholic), is at home with sacramental forms of worship and has creativity to develop both contemporary non-Eucharistic and Eucharistic worship

Gifts in leadership & Discernment

Someone who:

- can discern, develop, and deploy the gifts of others in mission and ministry
- possesses excellent relational skills, emotional intelligence, tenacity, and resilience
- has the ability to work collaboratively, building and sustaining life-giving teams while being willing to delegate and make strategic decisions
- has aptitude, experience, and gifts in strategic leadership for vision and growth implementation



We would love to see these qualities in our new Priest-in-Charge:

Vision for Evangelism

Someone with:

- a vision for, commitment to and experience of evangelism and church growth across all ages
- the capacity to see new missional opportunities and implement them

Experience in Developing Youth/Children's Ministries

Someone who:

- has a passion to inspire, children, young people and young families in the faith
- is able to develop the ministry team as we seek to grow our ministry with families and young people





How will we support you?

We have a lay ministry team comprising 1 Reader, 2 Licensed Lay Ministers and 2 Recognised Lay Ministers who all play an active role in the life of the church. Both LLMs have PTO for funeral ministry.

We have 2 churchwardens and 2 deputy churchwardens to help support the running of the church.

We recently established a small pastoral care team, which needs some development, but consists of mature Christians who feel called to spend time visiting and praying with others within the congregation.

There will be no lack of cups of tea, cake, conversation and humour in our gatherings and team meetings to feel supported and encouraged.

We have respect for days off and will support you in time out for retreat and to nurture your own spiritual growth.

We have close working relationships with the churches in our cluster and we enjoy worshipping together, learning together and supporting each other where possible.

Prayer & Worship

Our worship is a blend of Catholic and Charismatic traditions, celebrating the sacraments and opening ourselves to God's Holy Spirit. We meet and worship with expectation to encounter God's presence moving among us. Our Eucharist services are relaxed with common worship liturgy, full Eucharistic vestments and the sacrament is reserved.

Once a month we have an all-age service of the word, which allows space for a little more creativity in worship.

Weekly Services

10am Wednesday—Reflective Holy Communion Service

10am Sunday—Holy Communion Service with modern worship music and prayer ministry

7:30pm Wednesday—A contemplative reflection with compline

7:00pm Thursday —Holy Communion (Not currently possible)

2nd Sunday of the Month—Service at Harrier House

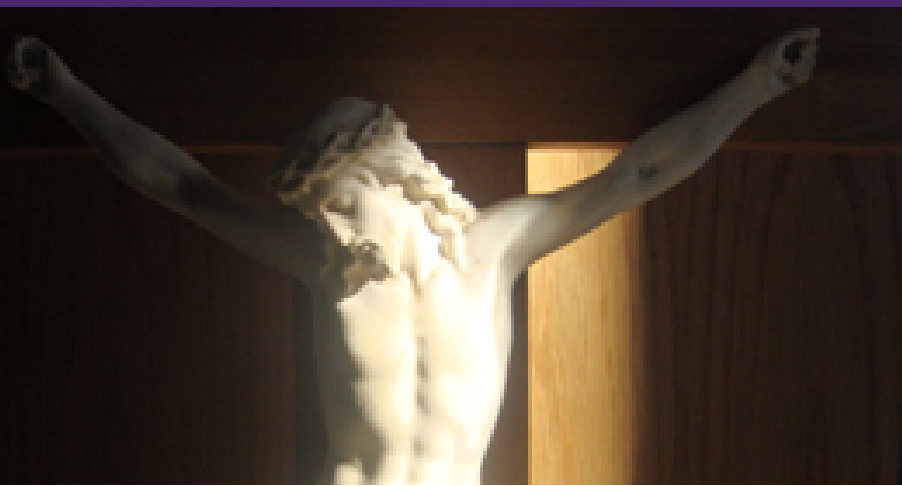
We have always engaged with the local schools leading assemblies and in the past incumbents have been invited to serve as governors becoming fully engaged with the school leadership and community.

During the pandemic and during lockdown, we offered online worship using zoom and live@5 with different ministers leading evening prayer live on Facebook. In the past we have offered café church Sunday, once a month 11:30am and a mid week pram club which ran on Wednesday mornings and are currently exploring opportunities to re-engage with the young people in the community.

We usually hold a service of hope and remembrance, around All Saints' Day, which is well attended by people from the community.

During Holy Week we have services each night at 7pm.

The Christmas services are always very well attended. Midnight Mass and the Christingle service in particular are a full house which usually incorporates puppet ministry, nativity and carols by candle light.



Who We Are

Since becoming a new parish we have had an increase in occasional offices. It's been difficult to gauge how much of an increase due to the new parish only being established shortly before the beginning of the pandemic, but it's been a blessing to have had a few weddings and baptisms in the short time since the easing of restrictions. Sadly, we've also seen an increase in funerals.



St Peter and St Paul's is a welcoming and inclusive community with a desire to worship God, serve our community, and share the Gospel. We always hope to create an environment where everyone feels accepted and loved. We are a church family, being "family" is very important to us worshipping, working, and playing together.

The Governance of the church is founded on grace and respect for all, and any decisions made collectively are upheld for what is recognised as being in the greater good of the community.

Our church has a modern Catholic aesthetic, with a Westmorland slate altar and full immersion baptistry reflecting "the beauty and holiness" of our Sacramental worship. Charismatic worship is also important to us and, combined with sacramental worship, brings a richness of beauty and depth to our worship. Many from our congregation have enjoyed camping and worshipping at New Wine for many years, and we have also been blessed to host OFM ([On Fire Mission](#)), "On Fire Mission is an inclusive network, rooted in the Church of England, and open to all, which is dedicated to promoting Charismatic renewal blended with the riches of Catholic spirituality".

Outreach is something that we try to keep at the forefront of our prayers and plans. We have several outreach initiatives that run, welcoming different people from our community.

- Community cinema club—Once a month, open for all for recently released family films.
- Youth Group— The youth group is not currently running, but we are committed to the youth in our area and currently exploring options for restarting our youth outreach.
- Over 60's group
- Men's Night—a very well-attended social for men, younger and older, church and unchurched
- Games afternoon, run by two members of the congregation and open to all and well received by the community.
- Friendship coffee morning meets on Thursdays twice a month.

We have plenty of footfall from the community through our church and church hall and are looking for opportunities to take those connections to the step of exploring faith and commitment to Christ.

Young People

Post-Covid-19 pandemic has brought many changes to the way we all live our lives today, this has undoubtedly taken its toll on the church congregation, especially for our families with young children and teenagers, which is reflected in reduced engagement and attendance. Encouragingly, however, we are beginning to see a little growth in adult attendance.

Pre-pandemic, we had a healthy number of over 20 children on our Junior Church register, with between 3 and 10 attending at regular intervals. We have two teams of youth leaders leading worship and bible study through creative play, crafts and drama alternate weeks.

We have found that many young people have been keen to join the puppet ministry team, bringing performances to the community during popular services at Easter and Christmas and we encourage all children to take an active role in the main church service if they'd like to. This can be from sharing learning from junior church, reading prayers or robed as servers during Eucharistic services.

As many of our children are now entering their teenage years, their needs are changing, and we must, moving forwards, explore different approaches to encouraging them in Bible study and deepening their faith. In addition to Junior church, we have over many years run youth groups. These have always been very popular with the young people in the surrounding estates. Although this group has been temporarily suspended, we are looking to run this again with people who are passionate and gifted in this ministry.

As we navigate our way forward, we see excellent opportunities to revitalise our junior church, encourage them to return to church and welcome new families who have moved into the area from the new homes built in West Hucknall.



Puppets from our Puppet Ministry at the Christingle Service

Priorities of the Role

YOUNGER – engaging with local schools, children's groups and youth, discipling our young people to grow in faith and grow into the life of the church.

WIDER – engaging with the wider community in imaginative ways.

DEEPER – growing disciples, young & old with a deep-rooted faith and spirituality



As a parish, we are committed to engaging with the Diocesan vision of growing disciples younger, wider and deeper. We have identified the following priorities to help us in this mission.

As a whole – To grow St Peter & St Paul's numerically and spiritually to reflect the social profile of the parish, especially reaching out to young families and young adults.

Sunday mornings – To create a thriving and Spirit-filled worshipping community for all ages, by developing and building on the embedded distinctive, charismatic Catholic approach to spirituality and mission, growing a contemporary style of worship that is welcoming and accessible to everyone, reaching a more diverse demographic.

Brand new – To instigate and develop new worshipping communities or new congregations to reach different people in the parish

Good news in action – To support our desire to engage with our local community and address issues of social justice.

Children and Young People – To build on and grow the engagement with schools and other organisations working with children and young people, looking for new opportunities to disciple the young.

Pathways to faith – To develop pathways of discipleship from first enquiry through to full participation and integration in the church, making the most of the wide range of opportunities the church has to draw alongside people.

Shared Leadership – To grow a leadership team that reflects a younger, local demographic, including the development and mentoring of local missional leaders.

Resources – To focus the resources of the church (financial, buildings and personnel) on the above priorities

Giving – Create a culture of radical generosity and financial sustainability.

Our Hope for the Future



Cinema Club

The community cinema club started with a Christmas party. We have over 70 members registered with the cinema club currently and more following on the Facebook page.

Ministry with Young People

We have always worked well with younger children of primary school age but have found teenagers tend to drift away. We are hoping to develop our ministries with comprehensive school age young people to offer the opportunity for them to grow in their faith and fellowship.

Men in Sheds

As part of the Bishops initiative, 'Wider, young, deeper', we started a 'Men in Sheds' planning group with the vision being to bridge the gap and serve as outreach to many people in our community. This is a large project requiring building work, for which we have planning permission and faculty. We are currently awaiting feedback from funding applications from all churches trust and the National Lottery. (Click [HERE](#) for full details)

Flying High Primary School / Edgewood Primary School

Over the next few years we are hoping to build on our links with the local schools. We already have good relationships with the schools, but it's been more difficult to maintain these links with covid restrictions. Edgewood school, being close by, like to visit the church on occasions for special services.

Explore ministry in the new housing estate

With the development of new houses and a new school there are significant opportunities for ministry. Before the beginning of the pandemic we had started to develop links with the school and there are significant opportunities for outreach.

Chaplaincy opportunities

Our previous incumbent had links with Rolls Royce and with the Air Cadets as chaplain. Our local beaver groups have visited the church to earn their faith badge a couple of times. They planned and led a carol service for their families which filled the church.

Strengths, Weaknesses, Opportunities, Threats

[Click Here for detailed SWOT Analysis](#)



Our Lay Ministers



Andrew Pointon — Reader

I came to St Peter and St Paul's with my wife and sons in 1979. Since then I have been involved in many activities in church over that time, which include 7 years as Churchwarden. I felt the call to lay ministry in 2006 and was licensed as a Reader in 2010. Since then I have taken services and preached a number of times here and in other churches, and continued to help lead various courses. I believe in prayer and in bringing God's word to his people to help them learn about his gifts and his transforming power.



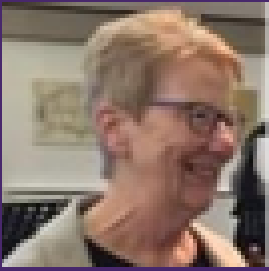
Darren Wilkinson — Licensed Lay Minister with PTO in funeral ministry

Originally I am from the Pentecostal Church and came to St. Peter and St. Pauls in about 2015. I signed up on a journey in faith course in 2017 which led to me being put forward to train as a LLM. I was accepted, and after a two year ministry course I was put forward, and was licenced at Southwell Minster in October 2020. At the moment I lead and preach occasionally during the Sunday service and co-lead our Wednesday Compline service. I am also a churchwarden, church admin and PCC secretary



Viv Chambers — Licensed Lay Minister

I completed a one year 'Journey in Faith' course and continued my studies with The School of Discipleship at Jubilee House, Southwell, for a further two years. I was licenced to the role of LLM at Southwell Minster in October 2020. I have served in the role of Church Warden for six years from 2012 and have been involved in ministry for Baptism Preparation, Youth Group, Junior Church, Puppet Ministry, and leading a Home Group. I have completed a course for Funeral and Bereavement Ministry in 2021, which I hope to develop with our new priest. The focus of my ministry currently is with children and young families.



Jill Allen — Recognised Lay Minister (Helping Adults Learn)

I have been a Lay Minister for almost twenty years and my specialist training was in Helping Adults Learn, although my real passion is for music in worship. We love to sing at P&P and have been blessed with some great musicians over the years so I have been leading the music group, choosing music and taking rehearsals. About four times each year I lead and speak at our All Age worship services which I also enjoy. Preparing and sharing leadership of many courses has also been part of my ministry.



Caroline Shaw - TSSF & Recognised Lay Minister (Evangelism) / Churchwarden

I was commissioned as a Lay Minister in 2004 after a two year lay ministry course and am now part of the Diocesan Spiritual Direction team. I have served the Hucknall churches as a part of the Hucknall School Ministry team, with the vision statement—" Every child in Hucknall will know the name of Jesus" and been involved with the youth group and co-led the pram club. I am a professed Franciscan with the Third Order of the Society of St Francis. Franciscan spirituality is at the heart of my Christian journey and reflects in the adult worship I lead. The ministry I am involved with is predominantly adult prayer and worship at the moment.



Our Congregation

"To have someone who will be dedicated to the Eucharist with an ability to nurture us..."

"Music has always been a huge part of worship at P&P. I have really enjoyed services which have included prayer corners or different activity stations..."

"The most important qualities of a Vicar that we'd like are, a Christ centred person who can discern and encourage..."

"An open person with good communication skills and a sense of humour, able to converse with a broad range of ages and social backgrounds. Someone who can relate to a family church..."

"We need a spirit filled person who challenges us, and guides us through their preaching. We need a prayerful person who will encourage a prayerful congregation..."

"Someone who is prayerful and committed to spiritual growth..."



1234567890

★ ★ ★ ★ TICKET ★ ★ ★ ★

This is what our Junior Church have to say:

"We like being involved in puppet ministry, crafts and songs with actions"

"This is a brill church—we like crafts and Easter egg hunts"

"We like baking cakes, dancing , watching films and doing crafts"

★ ★ ★ ADMIT ONE ★ ★ ★

1234567890



Vicarage

The vicarage is a four-bedroom house built in the 1970s. It has a yearly inspected alarm system, a gas boiler central heating system and is fully double glazed. There are solar panels on the roof, both front and back which feed into a smart meter.

At the side of the property there two single drives both with gates. One of the drives leads into the garage.



Downstairs

The study is located facing the church and is accessed from the front lobby without entering the living space of the vicarage.

There is a BT landline registered to the church and additionally connections for a private BT landline and internet service.

Downstairs: access to lobby, study, toilet and sink, under stairs cupboard, dining room, lounge, open plan kitchen and utility area.



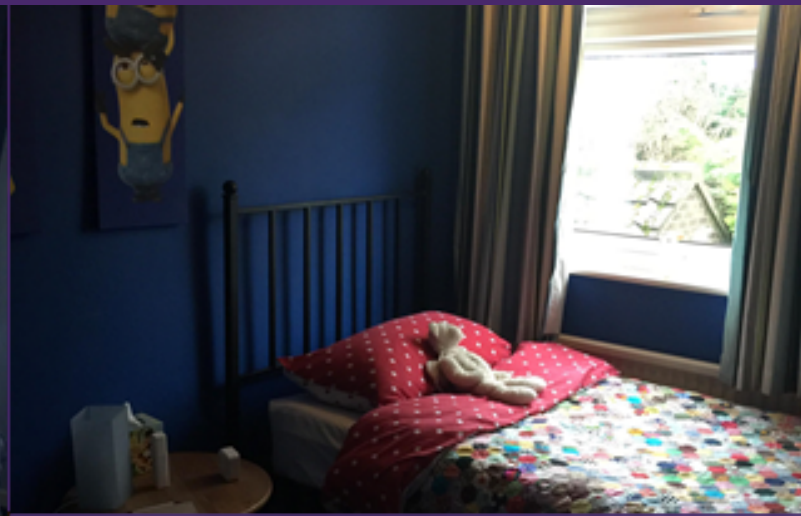
Lounge & Dining Room

Down the hall to the left is a dining room which leads through to the living room. The dining room can be separated off or opened up to join to the living room as an open plan living space.



Upstairs

Bathroom with toilet, sink, bath and shower, airing cupboard, 4 bedrooms with fitted wardrobes, storage cupboard on the landing.



Financial Statement

TREASURER'S REPORT FOR THE FINANCIAL YEAR ENDED 31 DECEMBER 2021

General Fund

This year we had an overall deficit of £4,403 compared to a deficit of £1,701 in 2020. This year's deficit is made up of:

- Deficit of income over expenses - (£5,050)
- Increase in value of CBF investment - £647

The main changes on the General Fund this year were:

Income:

- Donations by church members with associated tax recovered were down by £2,313 this year.
- One-off gifts and grants were up by £99.
- Combined sundry income from tea bar receipts, donations towards flowers, sale of pens and diaries and the smartie tube collection were down by £67.
- Sequestration grants received from the Diocese towards the cost of visiting priests amounted to £1,036.
- Fees from weddings and funerals decreased by £661.
- Donations from church affiliated groups towards the cost of running the hall were down by £861.
- There were no fundraising events held during the year due to the COVID-19 pandemic.
- Rents received from letting the hall out to third parties decreased by £844, mainly due to closure due to the COVID-19 pandemic.

Expenditure:

- Parish Share paid for this year was £37,140 compared £38,376 paid last year and represents 100% of the figure set by the Diocese.
- Fees and expenses paid to visiting priests, who have assisted in allowing services to go ahead, amounted to £1,056 compared to £179 last year. £1,036 of this year's cost has been recovered by way of sequestration grants from the Diocese (see income above).
- Maintenance costs for the church, church hall and grounds were up by £488.
- The costs for printing, stationery and postage were down by £710 compared to the previous year.
- Architect's fees of £828 were incurred this year in respect of the Quinquennial Report that we are obliged to have prepared every 5 years.

Restricted Funds

There were no movements on restricted funds during the year. The total amount of restricted funds held as at 31st December 2021 was £8,478 and a breakdown of this figure can be seen in the lower half of the Balance Sheet on page 7 of the accounts.

Ian Dennis – 6th February 2022

The full accounts can be viewed by clicking [HERE](#)