



THE BENEFICE OF CHRIST CHURCH WORKSOP & ST LUKE'S SHIREOAKS



A Community of grace, loving God and neighbour



PARISH STATEMENT

*PATRONS: Bishop of Southwell & Nottingham and CPAS
March 2024*

CONTENTS

<u>Our Mission and Vision</u>	2
<u>Qualities and Skills</u>	3
<u>Priorities</u>	4
<u>Our Diocese</u>	5
<u>Our Deanery</u>	7
<u>Description of the Benefice</u>	8
<u>The Vicarage</u>	10
<u>SWOT Analysis</u>	11
<u>Our Seven Strategic Areas</u>	12
<u>Safeguarding</u>	22
<u>Finances</u>	22
<u>Community Outreach</u>	23
<u>The Church Team</u>	24
<u>Statistics</u>	25



OUR MISSION

A Community of grace, loving God and neighbour.

OUR VISION

From our firm foundation of a 'can do' attitude our vision is to continue to increase our worshipping communities, especially from the families and children in the new housing developments near each church.

To be proactive in serving our communities when a need is highlighted. To actively encourage, and engage with, those around us to show them the blessing of Jesus Christ.

God's Kingdom is open for all and the harvest is plenty. Our vision is to engage proactively with our communities by:

WELCOME

To identify the 'lost generations' of 20's, 30's and 40's, welcoming and encouraging young families living in the new development areas surrounding both churches, encouraging their return to faith, or supporting them in their first encounter with the love of Jesus.

PROVISION

To enhance our wider community involvement and provision where a need or opportunity is seen.

ENHANCEMENT

To engage, empower and train the emerging leaders who will serve and be embedded in our flourishing mission.

Comments made in one of our parish profile workshops

"We could be braver - get out of our comfort zones. It is a catalyst for us to step out in faith and be the churches that respond to God's call and God's work to be done."

"It is not a church focussing on sharing the gospel or religion only, it is a church helping people and community."

QUALITIES & SKILLS

The PCC would welcome either a woman or a man as its next vicar. To achieve our aims and objectives we believe the person required would need to have the following key qualities and skills :

- A love for God in their heart
- Compassionate, charismatic, sympathetic, empathetic, a listener, and an encourager, confident in their own abilities
- A strong leader, able to lead by example
- Common touch, approachable, sense of humour with a genuine 'love' for people
- Commitment, experience and a vision for growth across all age groups and ethnicities
- Team builder, team player with the expertise to engage and empower others
- The ability to inspire and relate to children, families and young people whilst nurturing them on their journey in faith
- The capacity to reach out and bridge the 'generational gap'
- To identify the 'lost generation ' of believers and help them rediscover their faith
- A commitment to teaching, nourishing and enhancing new leaders
- A competence with technology to enhance worship and spread the word



PRIORITIES 2024-2030

Based on our SWOT analysis and the priorities already set within the context of our Growing Disciples Plan, these are the priorities that we must address in the next 5 to 6 years.

PRIORITY 1

To grow the existing Sunday congregations of Christ Church and St. Lukes numerically and spiritually, reflecting age, ethnicity, and social profiles.

Measures:

- Christ Church 9am service to 40 people.
- Christ Church 11am service to 40 young people aged 3 to 11.
- Christ Church 11am service to 40 young people aged 12 to 18.
- Christ Church 6:30pm service to 40 people.
- St. Luke's 11am service to 70 people.
- St. Luke's 11am service to 20 young people aged 3 to 11.

PRIORITY 2

To establish a link to Rhodesia to provide community outreach, especially in this area of social deprivation, and engaging with the new housing developments.

Measures:

- Toddler Group increase to 40 people
- Coffee Morning increase to 30 people

PRIORITY 3

To further enhance and develop provision for inclusivity and diversity especially for the Hong Kong, East European and African communities.

Measures:

- Increase "Wednesday Connect" by 40 people from the wider community

PRIORITY 4

To develop our men's ministry.

Measures:

- Support group with 20 men
- Mens' activities with 30 men
- Faith group with 20 men

PRIORITY 5

To continue developing a culture of generosity through teaching and events.

Measures:

- Increase giving by 20% in order to meet full ministry costs.

PRIORITY 6

Enable commitment to faith.

Measures:

- Home Groups with 25 young people
- Home Groups with 25 young adults - 16 to 20 year olds
- Home Groups with 25 people in family groups

PRIORITY 7

Increase the number of leaders for worship, prayer and strategic planning.

Measures:

- Core team of 10 people

OUR DIOCESE

GROWING DISCIPLES OF CHRIST

WITH COMPASSION, CONFIDENCE AND COURAGE

A statement from the Bishop of Southwell & Nottingham, the Rt Revd Paul Williams and Archdeacon of Newark, the Venerable Tors Ramsey.



“The Diocese of Southwell and Nottingham incorporates the City of Nottingham, the whole County of Nottinghamshire and five parishes in South Yorkshire. The population is 1.15 million – 51% live in the greater Nottingham conurbation, 31% in ex-mining areas and 18% in rural. There are 305 churches (252 parishes), served by 142 stipendiary clergy and licensed lay workers.

In 2024 we launched our refreshed vision of Living Hope for the city, towns and villages in Nottinghamshire and beyond. We believe the presence of thriving, growing churches across the diocese is vital for people to discover Living Hope and make the best decision anyone could ever make for their lives – to become a disciple of Jesus Christ. To enable this vision, we are committed to our mission of Growing disciples of Christ with compassion, confidence and courage. To support both parishes and the diocese in this we have identified 7 areas of focus: inspiring worship, reaching younger, enhancing diversity, growing leaders, enabling commitment, encouraging generosity and nurturing prayer. This vision is set out in more detail on our website.

As you consider the role of vicar of Christ Church Worksop and St Luke’s Shireoaks may I encourage you to take time to look over and reflect on our diocesan vision as part of your discernment as to whether God is calling you to be part of this diocese at this exciting time.

I look forward to welcoming the new incumbent of Christ Church Worksop and St. Luke’s Shireoaks to join us on this faith-filled journey.”

Rt Revd Paul Williams, Bishop of Southwell & Nottingham

‘It is my hope that each worshipping community in the diocese will develop a compelling picture of its own future in God’s purposes with an expectation of growing numerically and in the scope of its mission. It is my prayer that the new vicar of Christ Church Worksop and St. Luke’s Shireoaks will have the creative leadership and imagination to develop discipleship, plan for growth and reach out to the unchurched of all ages in its locality.’

The Archdeacon writes, "We find ourselves at a crucial moment for the church in relation to a changing culture. The good news of Jesus Christ is as important and life-giving as it has ever been. There are many opportunities to serve the people of Worksop with the gospel of hope in the power of the Holy Spirit. These parishes have been on a journey of engagement with their communities, supported by a great team.



Every parish is encouraged to create its own 'Growing Disciples Plan' so that it can play a significant part in the strategic commitment to growing disciples of Jesus Christ with compassion, confidence and courage. This may include identifying the opportunities to reach new people within the parish through a new worshipping community. I look forward to supporting the congregations of Christ Church Worksop and St. Luke's Shireoaks in their mission and welcoming a new incumbent to lead and implement the vision for the parish. "

The Venerable Tors Ramsey, Archdeacon of Newark



BASSETLAW & BAWTRY DEANERY

The furthest north in the Diocese, the Bassetlaw and Bawtry deanery is made up of 46 parishes, working together as 15 Benefices, with both rural and town locations. In the main, the deanery matches the local government district of Bassetlaw, North Nottinghamshire but also includes one part of South Yorkshire in the Benefice of Bawtry with Austerfield. There are three MPs: Brendan Clarke-Smith (Bassetlaw), Nick Fletcher (Don Valley), and Robert Jenrick (Newark).

Our deanery serves a population of approximately 120,000 people, with a variety of backgrounds including farming, mining (in the West), and industry. Located adjacent to the Sheffield City Region and Doncaster, these conurbations provide the main employment opportunities. Connected by the A1 road, the East Coast Mainline and Lincoln/Sheffield railway lines, and nearby Doncaster/Sheffield Airport, the Deanery has ready access to London in just an hour and a half, alongside various local and international destinations.

The deanery has churches with larger and smaller numbers of attendees, vibrant market town churches, estate ministries, with many commuters working in the surrounding cities, and rural contexts. All, though, are well connected to their local communities through schools, occasional offices, community projects and a growing number of New Worshipping Communities, as well as many iconic church buildings.

The churches in our deanery cover all traditions and the area is rich in Christian history with a number of churches boasting links to the Mayflower Pilgrims. This Christian heritage with the Separatists that formed the Mayflower Pilgrims, originating in the local villages of Austerfield, Scrooby, Babworth and Sturton-le-Steeple. With Worksop, being the Gateway to the Dukeries, the four historic ducal seats of Worksop Manor, Welbeck Abbey, Thoresby Hall and Clumber House are all close by and provide ample space for walks, days out and historical fact finding.

The clergy chapter works closely together and offers support to each other through regular meetings, praying together, socials and fellowship, and encourages input from the wider Diocesan leadership team with regular speakers. Deanery Synod meets three times a year with lively discussion and information sharing. All parishes within the deanery have embraced the Diocesan vision of creating disciples, wider, younger and deeper and are fully engaged and excited to be looking towards the new Diocesan vision after the parish refresh process of disciples who are compassionate, confident and courageous.

The Deanery has an administrator, who is employed by the Diocese, and, together with the Area Dean and the Deanery leadership team, they provide incumbents and parishes with practical and pastoral support. We would encourage you to consider our deanery as a great place to work and further your ministry. For further information about the deanery and parishes please contact our **Area Dean, Dave Gough, Tel: 07858 144733 or email: stannesvicar@hotmail.com**.

THE BENEFICE



Christ Church was dedicated in 1993 and is a modern versatile building. It was planted by St. John's Worksop and built and paid for by a very committed team of people who had a vision for the church in this location. Octagonal in shape, harking back to the tent of the tabernacle, Christ Church was designed to be multi-purpose, so that it could be used on every day of the week.

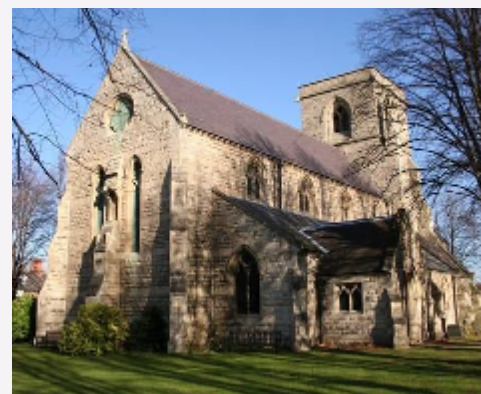
In February 2006 Christ Church became a parish church in its own right and was consecrated on 2nd April 2006. Modern in style, Christ Church provides a versatile venue for weddings and baptisms, offering facilities on-site for a family celebration. It also has great potential as a community space and is currently used for a wide variety of activities and events, serving the church, the community and the diocese.



The main worship area has a capacity for c300 people on chairs which can easily be moved and stored to create a space for other activities. The wing is used for a number of purposes including Kids' Church, Food Project and there is also a quiet room for prayer.

Adjacent to the main worship area is a lounge, and a kitchen which is well equipped and able to support in-house catering. The Worship Area has a Baptistry, this provides opportunities for full immersion baptism.

In contrast to Christ Church's modern style, St. Luke's Church is a Gothic-style, Victorian building, built over 150 years ago. The church sits in its own churchyard in the centre of Shireoaks village offering services every Sunday throughout the year. Traditional in appearance, St. Luke's provides a great venue for family occasions such as weddings, baptisms and funerals. The village memorial also offers a focus for the annual Remembrance Service.



A graveyard, which is still open and well maintained, surrounds the church, and is valued by local community.



Shireoaks and Rhodesia are both former pit villages which have now been redeveloped with small business units occupying some of the old pit site. Shireoaks is a tourist attraction with a marina built next to the restored Chesterfield Canal.

With support in the past from English Heritage and the Historic Churches Trust, St. Luke's remains a well-maintained, traditional church with a wealth of history. Adjacent to the church is the Village Hall, owned and run by the church, and serving the community with a busy schedule of weekly activities. It has recently been refurbished with grants of nearly £200,000. St. Luke's has supported for many years the uniformed organisations and Rainbows, Brownies and Guides meet every Wednesday in the Village Hall.

In 2015, as part of the Deanery 2020 strategy, Christ Church and St. Luke's joined together into a single Benefice. The Benefice has been successfully integrated within a short period of time, with a single PCC which meets on a monthly basis. Sub-groups have also been created covering Finance, Fabric and Funding, Worship and Pastoral Care all of which feed recommendations into the PCC. Both churches are well served with audio-visual equipment enabling live broadcasts of all of the services on a Sunday.

The Benefice serves a large area encompassing Gateford, Shireoaks and Rhodesia and there have been significant growth in new housing in Shireoaks and Rhodesia with over 570 homes being built and a further expansion of the Gateford estate.



Click or scan the QR code for a video of St Luke's History

The community has welcomed over 300 families from Hong Kong as well as families from Ukraine, Nigeria and other parts of the world, we have become a multi-cultural congregation particularly at the 11am service where we provide on-line translation of the service.

There are 6 primary schools within the Benefice, two of which are Church of England Schools with a further School opening soon on the Gateford estate. The Benefice is well served by bus and train services as well as easy access to the M1, A1M, M18 and A57. The area is also well served by local shops and supermarkets.

THE VICARAGE

The vicarage is ideally situated approximately halfway between the two Churches. being 1.7 miles from Christ Church and 2.5 miles from St Luke's. Getting to the churches takes 7-10 mins depending on traffic, or train lines.

The vicarage is modern well-built house set in a quiet Cul-de-sac. It has been very well maintained and a perfect layout for a vicarage, consisting of 5/6 bedrooms two receptions, large kitchen, and double garage. The house is close to shopping area and local pub and has two primary schools within walking distance.

DOWNSTAIRS

- Small reception room (ideal for meetings).
- Large living room with patio doors
- Dining room, with door to kitchen
- Large kitchen, with dishwasher etc.
- Utility room, with washing machine.
- Integral double garage
- Downstairs toilet

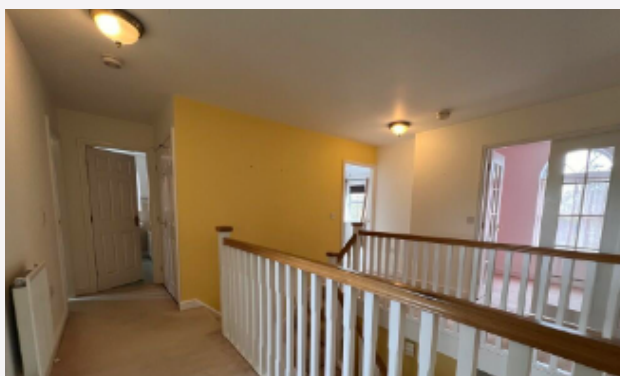


UPSTAIRS

- Master bedroom, with ensuite.
- Bedroom 2, fitted wardrobes
- Bedroom 3, with ensuite & fitted wardrobes
- Bedroom 4, with fitted wardrobes
- Bedroom 5, with fitted wardrobes
- Bathroom with large bath and separate shower cubicle.



The vicarage is fitted with Solar Panels.



Click or scan the QR code for a video of the Vicarage



SWOT ANALYSIS

STRENGTHS

- Welcoming, thriving, caring, faithful, nurturing members
- Diversity within our community
- Effective compassionate care
- Good IT provision
- Willing and committed volunteers
- Underpinned by prayer

WEAKNESSES

- More volunteers as we expand
- Clearer communication
- Diversity in lead roles
- Cultural & language barriers

OPPORTUNITIES

- Growing - with new housing and increasing population
- Toddler groups engaging with families for baptism and other services
- Expanding children's ministry
- Empower and nurture new leaders especially in men's ministry
- Expansion of the Christ Church building to increase community provision
- Community outreach increased to encompass Hong Kong older generation

THREATS

- Financial constraints increased giving required
- Time, and time constraints, inflexibility and challenge
- Dynamics of serving all ages in the church family effectively

OUR SEVEN STRATEGIC AREAS

GROWING DISCIPLES OF CHRIST

WITH COMPASSION, CONFIDENCE AND COURAGE



Inspiring Worship



Enabling Commitment



Enhancing Diversity



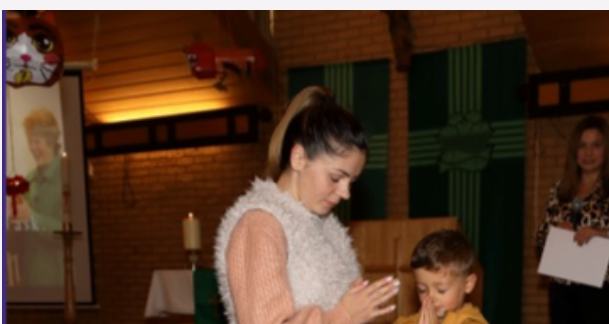
Reaching Younger



Growing Leaders



Encouraging Generosity



Nurturing Prayer

INSPIRING WORSHIP

On Sundays we offer four services across the Benefice, each with its own style and congregation. We come together as a Benefice for some key services such as Remembrance and Midnight Communion and for other significant celebrations in the life of the Benefice. Each of the services utilises a modern audio visual system which displays the liturgy and lyrics. Some of the service are led by a worship group others by recorded music.

All of our services are live streamed to Facebook and YouTube and attract a number of people both locally and overseas. The ministry team lead all the services with members of the congregation reading the bible and leading intercessions.

Christ Church 9am

This service is normally a traditional Holy Communion Service with a service of Morning Prayer once a month. With the current ministry team we have been able to sustain the Holy Communion Services during the vacancy. There are normally about twenty-five people in the congregation who are mostly over 60-year-olds. The worship typically uses a range of traditional hymns and more modern songs and has a gentle and welcoming atmosphere.



The congregation generally has a good knowledge of the Bible and enjoy sermons which widen their knowledge. There are four experienced preachers who preach regularly, eight people who read the Bible and two who lead intercessory prayers. Each service is followed by tea, coffee, biscuits and a chance to sit and chat to friends and enjoy seeing the youngsters coming in for the 11am service.

Christ Church 11am

This service has been transformed to appeal to young families and other ethnicities. The service is normally a Family Service, with Baptisms and Holy Communion once a month attracting about 50 adults each week, 13 teenagers and 17 under ten-year-olds.



Our Family Minister co-ordinates a team of helpers for the three Kids' Church groups, SPARKS for the under 5s, STARS for between 5-10 years, and IGNITE for the over eevens. IGNITE stay in the service once per month, and are encouraged to participate in the service either playing in the music group or reading the Bible.



The service attracts people from many countries, this has led us to provide simultaneous translations through the Microsoft Translator app. We also sometimes translate our notices and sermons into good Cantonese which is available through a QR code.

We have a good team of support for reading the Bible and leading prayers, moving chairs, and operating the technology. We finish with refreshments and people enjoy spending time together.

Christ Church 6.30pm

This service is normally a Praise Service with a Holy Communion once a month. It attracts up to 20 faithful people and they usually come to this service exclusively. The style is relaxed, with the flexibility to spend time going "deeper" in preaching, or prayers. A music group lead the singing. This service attracts people who need time to talk, or ask for prayer, so we always finish with tea, coffee.



St Luke's 11am

The services at St. Luke's alternate between Holy Communion, Family Services and Baptisms every month. With the current ministry team we have been able to sustain all the Services during the vacancy. We attract about 35 adults each week, two teenagers and one under ten-year-old. Rainbows, Brownies and Guides also come to church on special occasions such as Remembrance Sunday.



The Assistant Family Minister, leads the Kids' Church which we are looking to grow significantly over the next 5 years.

The worship is led by either the music group or with recorded hymns and songs. Most services have a blend of traditional hymns and modern worship songs.



There are two experienced preachers who preach regularly, six people who read the Bible and six who lead intercessory prayers.

During the winter months, with permission from +Paul, we have re-located the normal Sunday services into the adjacent Village Hall to ensure everyone is warm. There is always a warm welcome and refreshments after the service.

ENABLING COMMITMENT

At Christ Church and St Luke's we are establishing a pathway for discipleship. We are endeavouring to enable church members to easily navigate their way forward, within the structure of our provision, on their personal journey to find their own relationship with Jesus.

Our most recent Alpha (Sept - Nov '23) saw a group of 49 people attending our 10-session course, among whom were 12 young people and 18 Cantonese-speakers. This was the springboard for a refocussing on our Homegroup provision and, after adding 4 new groups at the completion of Alpha to maintain the nurture and support post-Alpha. We now have 10 homegroups and more groups in the planning stages. (These groups are guided by 2 of our Lay Ministers.)

With many community activities taking place on week days and 4 services on a Sunday to deliver, there are various ways to volunteer to serve. New-comers find they have a place to suit their gifts and find joy in serving God and others. Opportunities can range from sound engineer to washing pots in the kitchen, from gardening to film-making. All team members are supported by a team lead and are also usually included within a WhatsApp group to keep in the loop with current happenings and to feel included within the family of the church.



We are working towards a culture of working in unity as the body of Christ, all playing our part. This ethos starts with our Church Wardens and Clergy and is filtering down throughout our church teams and congregations. Through prayerful and careful empowerment, we are laying further foundations and structure within our churches for our prayed-for growth, both within our buildings and in reaching more hearts within the community.

Further nurturing generosity of heart, we have planned Giving Sermons in early 2024, to help promote an attitude of prayerful regular financial giving, especially amongst those new and unfamiliar with the church system of self-sustainability.

As a Benefice, we currently have three members in the early stages of applying for Lay Ministry. As with our multi-generational, multi-cultural Alpha, it is our view that all ages have the potential to lead. We are constantly mindful that the church of tomorrow requires us to see who God is bringing to us, grow them into the people God made them to be, and empower them as leaders in whatever field their talent lies.

ENHANCING DIVERSITY



Commissioned to serve the needs of the parish, as our area receives increasingly more newcomers from various backgrounds, we are adapting quickly to serve their needs appropriately.

Being the site of several new housing estates, we host incomers from different parts of the UK, and those recently arrived from other countries. We serve those in our congregation and community with many backgrounds; notably, Polish, Ukrainian, Lithuanian, Nigerian, and predominantly Hong Kongers – 300+ having moved into our community within the last 2 years. Mirroring our diverse community, we have staff and PCC members from various ethnicities within the structure of the church.

In Nov 22- Feb 23 we ran an English course, led by our ESOL-trained LLM. This successful programme saw 20 students regularly attending, learning English, socialising with those from other backgrounds and integrating into the local community.



In April 23, we began a 6-week 'Welcome to the UK' course, designed by the HK and UK governments aiming to help with language-learning, resettlement and integration.



In October 23, we were successful in a bid for a grant from East Midlands Council to provide support for Hong Kongers in the Bassetlaw area. We now run a programme of information, activity and cultural exchange sessions called 'Wednesday Connect', which also offer opportunities for social inclusion and social eating.



On Sundays, our 11am Service at Christ Church has developed to engage the differing backgrounds and languages within the congregation. The whole service can be translated into any language using the Microsoft Translator App. Notices are translated in person in real time where there are details to clarify. Prayers are said and the Bible read by representatives of all backgrounds, reflecting our multi-ethnic church.

The sermon is translated weekly into Cantonese using a QR code on the screen, other congregation members help to translate into Ukrainian when possible. As for sung worship – we regularly have at least one song that can be sung in more than one language, the sound of many tongues together resounding beautifully and a picture of heaven!

REACHING YOUNGER



Our work with young people has blossomed over the last few years with a “Kids’ Church” run each Sunday with four separate classes run by our Family Minister and volunteer team. There are 30-40 children and young people each Sunday at Christ Church. At St. Luke’s we also run a Kids’ Church in the Village Hall run by our Assistant Family Minister, whilst the numbers are small at the moment, this is an area that we want to grow and develop. We have also started a children’s choir at St. Luke’s which meets before Kids’ Church.

Each Thursday we run a Youth Club to which the wider community are invited, this is well advertised through the local schools that we work with. At the end of November 2023 Youth Club had a great time at the local Laser Tag centre and a Christmas party with Karaoke in December.

We now run three Toddler groups at Christ Church, Shireoaks and Rhodesia. The groups at Christ Church and Shireoaks are well established and very popular. The Christ Church group is run by volunteers from church and the group at Shireoaks is run in the Village Hall by our Assistant Family Minister and supported by volunteers from the community.

The Toddler Group at Rhodesia is run by our recently appointed Community Organiser with the support of volunteers – this is an embryonic group but has started well.

We welcomed four of our schools to a “Journey in Faith” session in October 2023. The sessions are very popular with the schools and take children on a journey through different aspects of the Christian faith. This year we held a multi-generational Alpha with 12 young people attending, this has led into a youth homegroup which meets every 2 weeks.

We have also developed and lead a course to encourage spiritual health and search hearts to determine suitability for confirmation and baptism.



This year both churches held a nativity service at the 11am service, the services were well attended by the wider community, with the children and adults coming dressed as a nativity character. Additionally we had two weeks of school nativity services held in both churches.

Our Family Minister leads full school worship in one of our 5 schools once a month. Our Assistant Family Minister is looking to lead worship in a further 2 schools in Shireoaks and Rhodesia, this is in addition to the bible story and craft sessions run weekly at Little Acorns pre school.



We also run a holiday club during the summer holidays, this year we have Gemma Hunt from Cbeebies coming on one of the days to run a Pirate Party Praise at both churches.



We are also planning another youth camp for Spring / Summer 2024.



GROWING LEADERS



Within our church, people have followed pathways towards ordination, lay readers and leaders within the congregation. As a church we are encouraged to pray fervently and frequently to seek out the 'voice' of God and what he is saying to us as an individual and a church body.

We, as a church, have in the past, used the Caleb stream towards ordination and exploring vocation with the support from the School of Discipleship at Southwell.

We try to encourage everyone to participate in the whole responsibility of the church by joining the PCC and taking part in the important decisions that must be made on behalf of our congregations and church body.

ENCOURAGING GENEROSITY

The average giving across the Benefice was £11.86 per week and at the beginning of January 2024 we have encouraged people to prayerfully reflect on their current level of giving and to consider giving on a planned regular basis if they are new to the Benefice.

The full impact of this is yet to be determined however the signs at the beginning of February 2024 are promising with the average giving now £13.75 per week.

We also encourage giving of time and skills and at the end of the recent Alpha course we held a session to outline to people how they could help the Benefice. This has brought new people into volunteer roles within the Benefice.

Over the last 5 years we have successfully obtained grants of over £365,000, this covers everything from grants for the refurbishment of Shireoaks Village Hall to grants for our food project, warm welcome and Hong Kong community integration.

Our most recent grants have seen £15,232 secured to fund a Community Organiser for Rhodesia and £13,788 for the installation of EV Chargers at Shireoaks Village Hall.

We also raise funds for Macmillan Cancer Research, with £1,000 being raised through our Coffee Morning with a Swing Band. Christian Aid and The Childrens Society also feature strongly in our giving to charity.

A number of the congregation sponsor children from Compassion and similar organisations and St. Luke's now has 3 children it sponsors.



NURTURING PRAYER

Prayer is at the heart of the life of our Benefice and is reflected in a number of ways. We start every Monday with Morning Prayer before we start our business for the day which include space and time for people to pray for particular people or situations.

Wednesday and Friday mornings we also offer prayers in our quiet room, before the busy day ahead begins. Intercessions at our Sunday services are led by different members of the congregation and requests for prayer are included within the intercessions at each of our services.

Home Groups are also a centre for prayer and people who don't like to voice a prayer themselves can request a prayer and feel the love of others in the room as they receive prayer for themselves or a loved one.

We also broadcast Night Prayer every weekday evening through Facebook. The service either follows the Night Prayer liturgy for the day or has a Celtic theme. The service attracts a wide community, including many who would not normally attend a church service.

During lockdown we used Zoom and WhatsApp to ensure that we continued to pray for each other and this continues today with prayer requests coming through daily. The pastoral care telephone calls were increased during COVID and conversations still continue and often end in prayer. It is our joy to pray for each other and to bring all our concerns and needs before God.

MONDAY	TUESDAY	WEDNESDAY	THURSDAY	FRIDAY
Zoom Afternoon	Youth Evening Home Fortnightly	Quiet Room Afternoon Fortnightly	Village Hall Evening Fortnightly	Hong Kong Home Evening Fortnightly
	Home Evening	Lounge Evening Fortnightly	Home Evening Fortnightly	
	Home Evening Monthly			
	Hong Kong Home Evening Fortnightly			

We have a range of Home Groups in the Benefice. Each has a distinct character and appeal and we share resources, support and encouragement regularly. The Zoom group developed online during lockdown and has proved popular.

CARE HOME MINISTRY

We have great hearts for those in local Care Homes and regularly visit, taking Holy Communion, providing opportunities for singing well-loved hymns, joining in with liturgy and just being there as a listening ear. Currently they regularly visit, Forest Hill, Gateford Hill, Jubilee Court and Beech House.

PASTORAL VISITING

Alongside visiting friends old and new in care homes, the team graciously share Home Communion with those who are unable to come to church through illness or frailty. This is highly appreciated by those who really miss gathering together for worship. We also provide access to all the Sunday services through Alexa and DVD's.

BEREAVEMENT GROUP

This group shares deep bonds and meet fortnightly at Christ Church, and also monthly at St Luke's for a Bereavement Coffee Morning. Composed of church members and non-church members, all are welcome and share support, encouragement and pleasant activities for people who are moving through different stages of bereavement.



SAFEGUARDING



Safeguarding is an integral part in the life of our Benefice and we are committed to promoting a safer environment and culture.

Our safeguarding officer /lead recruiter **Jenny Walker** ensures that our policies and procedures are reviewed and updated annually.

Jenny is also responsible for safely recruiting new volunteers by processing application forms and taking up references, ensuring safeguarding training at the appropriate level is completed and where applicable obtaining confidential declaration forms and the correct level of DBS checks. Jenny also contacts existing volunteers when their DBS check/training is due for renewal. Safeguarding is a standing agenda at all PCC meetings so that any safeguarding matters can be discussed. The Parish Dashboard is used by the safeguarding officer to ensure we follow the correct procedures and currently our dashboard overview shows 99% progress.

In addition to Clergy, LLM's and PCC members , we have a further 30 people with the appropriate level of DBS check and training (so around 51 in total). There are about another 30 volunteers who have Basic Awareness and where required the Foundations trainings as well .

FINANCES

Whilst we continued to flourish in obtaining grants during 2023, the accounts show that Christ Church made an overall loss of £27,839 and St. Luke's made an overall loss of £7,784. There are some key reasons for the losses - Christ Church giving for example is £18,000 below what was budgeted and a lower level of occasional offices have had an impact. Utility costs have also increased significantly. Giving at St. Luke's is also lower than expected and in addition to the utility costs a new projector has had to be purchased.

The Benefice continues to pay parish share in full, in 2023 the total share was £77,592 and will rise to £81,484 in 2024. We have a proud record over many years of always paying full parish share.

The "Finance Fabric and Funding" committee (FFF) a sub committee of the PCC, focusses on the financial management of the Benefice and brings back to the PCC plans for the maintenance of the buildings as well as monitoring and managing the finances on a monthly basis. We have recently received the quinquennial reports for both churches which can be viewed via the links below - these reports will help determine our programme of work and funding for 2024/25.

Further finance information is available on the Statistics page.

COMMUNITY OUTREACH



In 2022 we created a separate charity “The S8081 Community Foundation” which is registered with the charity commission. It was created so that we could obtain grants for community based projects, particularly where grants applications are prohibited from religious based organisations. The charity has its own governance board and structure but has a controlling interest from the Benefice.

There are currently three main projects running within the scope of “The S8081 Community Foundation”:



- East Midlands HKBNO Welcome Hub, which is a programme of activities to integrate the Hong Kong community into our community – the funding for this is £6,429 and finishes at the end of March 2024.
- Rhodesia Community Volunteer Support project, which is funded by Bassetlaw District Council using funding from the Government Levelling Up fund. The grant of £15,232 will support a Community Organiser for 12 months to set up and run a much needed Coffee Morning, Warm Welcome and Toddler Group in Rhodesia.
- National Grid – Community Matters project, which provides funds of £8,106 to pay for the costs of hiring the buildings for Coffee Morning, Warm Welcome and Toddler Groups across our 3 key locations (Christ Church, Shireoaks and Rhodesia) as well as providing funds for Warm Packs for those in need.

Shireoaks Village Hall is owned by St. Luke’s Church but with a focus on serving the community. In 2019 the major refurbishment of the Village Hall took place funded by grants and fundraising within the community. The total cost of the refurbishment was £146,408 with a further £32,601 being spent in 2023 to resurface the car park.

Before the end of March 2024 3 EV Chargers will be installed at the side of the car park to enable people in the community to charge their electric cars – this has been funded by “Bassetlaw UK Rural England Prosperity Fund” with a grant of £13,788.

We continue to provide support and help to families in need through our Food Project which distributes sandwiches and other food donated by the local supermarkets. This has recently extended to support the existing Food Hub in Rhodesia and people who come to the three new groups we run every week.

THE CHURCH TEAM



Within the Benefice we have two curates, who are in their final year of curacy and will remain licenced to the Benefice, and a retired vicar. We are also fortunate to have 2 Lay Readers and an active list of people who are able to lead worship, intercessions and read.

We also employ a Family Minister and an Assistant Family Minister to run our youth programme. We also employ an Office Manager and Communications Manager to manage our on-line communications. We also have a good team of volunteers who support both churches in terms of the maintenance and running of the buildings.

CLERGY



Revd Peter Stanley
(Curate)



Revd Louise Bearder
(Curate)



Revd Peter Alan Bailey
(Retired)

LAY READERS & CHURCHWARDENS



Vanessa Hamon
(Lay Reader & Churchwarden)



Anne Kean
(Lay Reader)



Irene Phillips
(Churchwarden)

FAMILY MINISTERS



Helen Murray
(Family Minister)



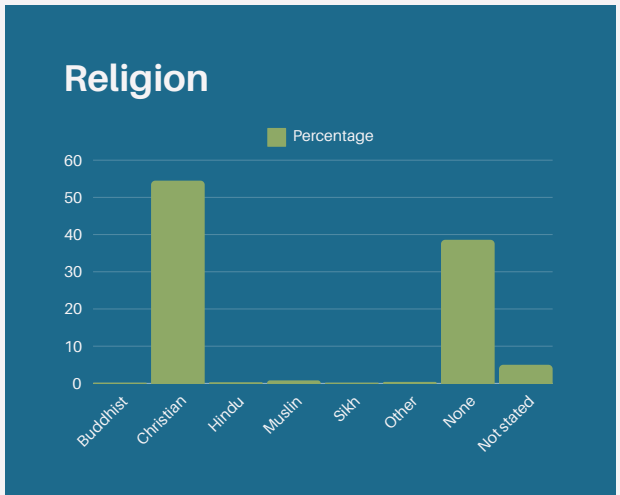
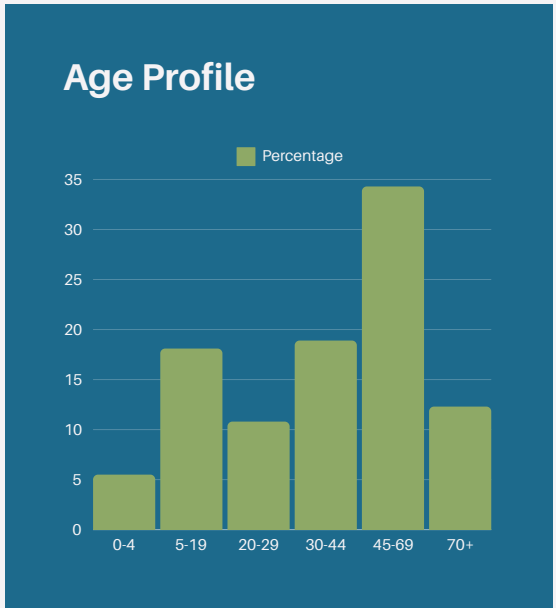
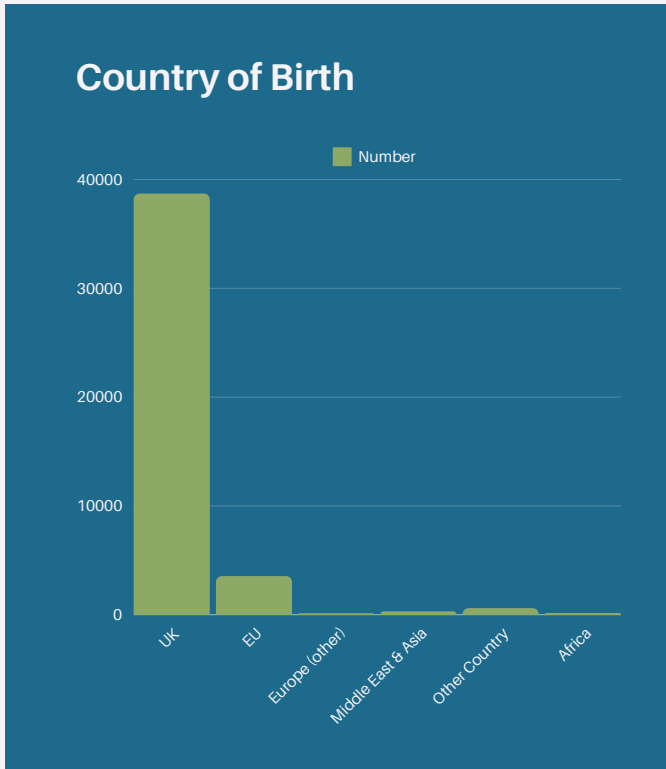
Ginny Harris-Shaw
(Assistant Family Minister)

STATISTICS



Based on the 2021 Census:

Population: 15,297
Occupied Houses: 6,352
Deprivation Rank: 7,359



BENEFICE ACCOUNTS



Christ Church St Luke's Village Hall S8081

FINANCE STATS



Christ Church St Luke's

QUINQUENNIAL REPORTS



Christ Church St Luke's

MISSION STATS



Christ Church St Luke's